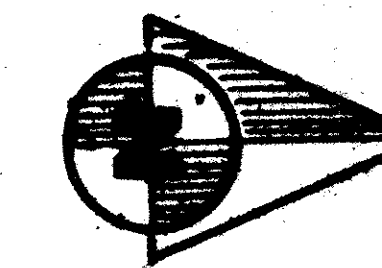


# DEER RUN

Lying in Sections 21, 22, 23 & 26, Township 43 South, Range 40  
East, Palm Beach County, Florida  
September, 1977

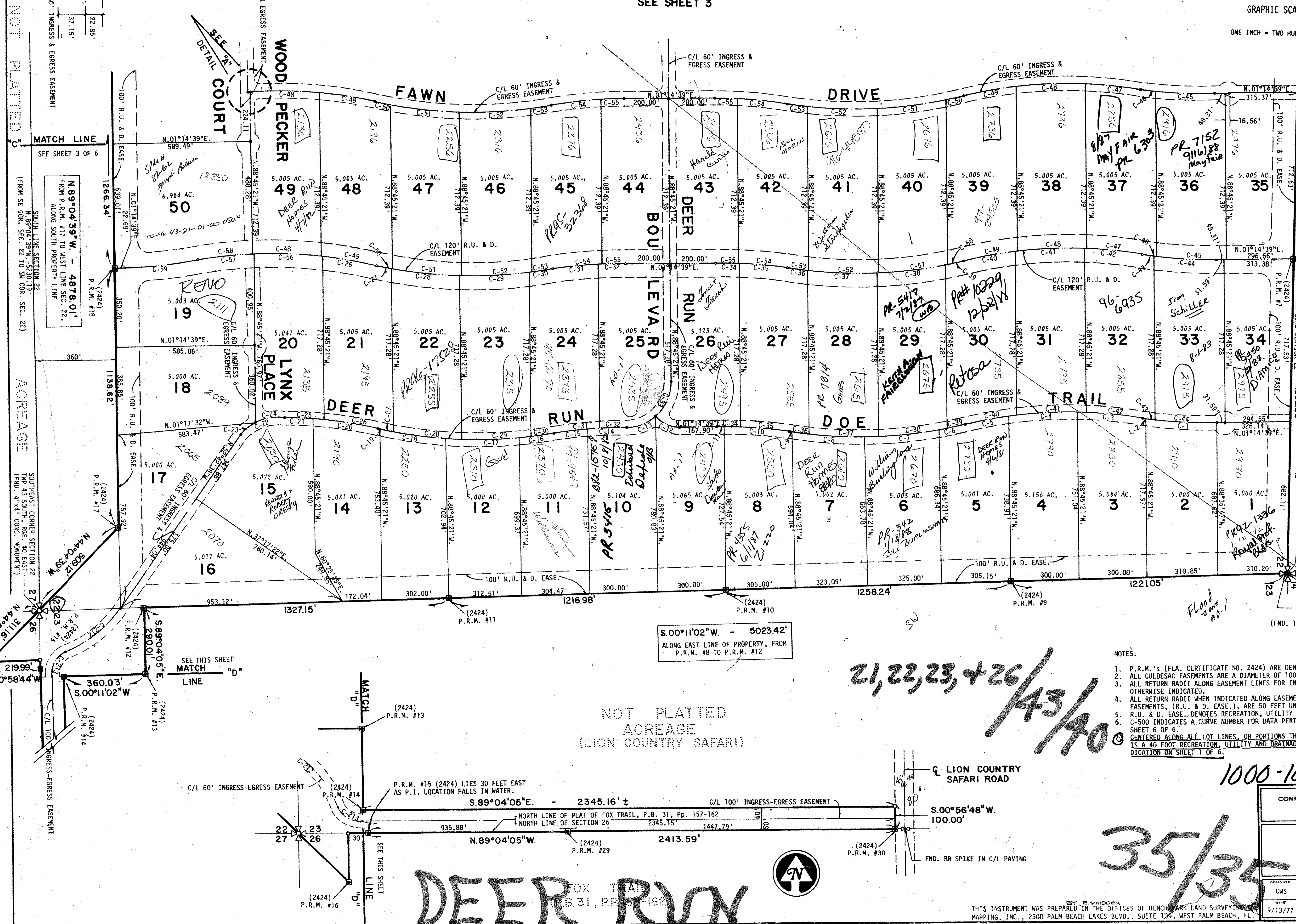
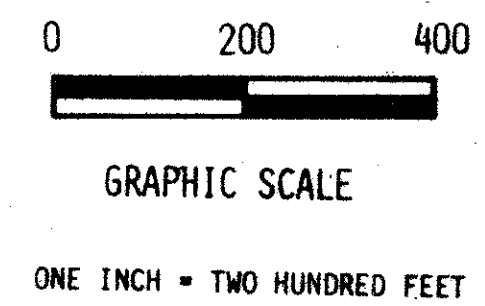
SHEET 2 OF 6

SEE SHEET 3



# 35

STATE OF FLORIDA  
COUNTY OF PALM BEACH  
THIS PLAT WAS FILED FOR  
RECORD AT \_\_\_\_\_  
THIS \_\_\_\_\_ DAY OF \_\_\_\_\_  
AD. 1977 AND DULY RE-  
CORDED IN PLAT BOOK  
ON PAGES \_\_\_\_\_ AND \_\_\_\_\_  
JOHN B. DUNKLE, CLERK  
CIRCUIT COURT  
BY: \_\_\_\_\_ DC



MATCH LINE  
SEE SHEET 3 OF 6

587°15'07"E - 5284.92'  
FROM NE CORNER SEC. 22 TO NW CORNER SEC. 22

P.O.B.  
NORTHEAST CORNER SECTION 22  
TWP 43 SOUTH, RGE. 40 EAST  
(FND. 1 1/4" I.P. & REPLACED WITH P.R.M.)

5.00°11'02"W - 5023.42'  
ALONG EAST LINE OF PROPERTY, FROM  
P.R.M. #8 TO P.R.M. #12

NOT PLATTED  
ACREAGE  
(LION COUNTRY SAFARI)

21, 22, 23, + 26 / 43 / 40

- NOTES:
1. P.R.M.'s (FLA. CERTIFICATE NO. 2424) ARE DENOTED THUS: [Symbol]
  2. ALL CULDESAC EASEMENTS ARE A DIAMETER OF 100 FEET.
  3. ALL RETURN RADII ALONG EASEMENT LINES FOR INGRESS AND EGRESS EASEMENTS ARE 25 FEET UNLESS OTHERWISE INDICATED.
  4. ALL RETURN RADII WHEN INDICATED ALONG EASEMENT LINES FOR RECREATION, UTILITY AND DRAINAGE EASEMENTS, (R.U. & D. EASE.), ARE 50 FEET UNLESS OTHERWISE SHOWN.
  5. R.U. & D. EASE. DENOTES RECREATION, UTILITY AND DRAINAGE EASEMENT.
  6. C-500 INDICATES A CURVE NUMBER FOR DATA PERTAINING TO SAME, CONSULT CURVE DATA TABLE ON SHEET 6 OF \_\_\_\_\_ CENTERED ALONG ALL LOT LINES, OR PORTIONS THEREOF, WHERE NO EASEMENT IS GRAPHICALLY SHOWN IS A 40 FOOT RECREATION, UTILITY AND DRAINAGE EASEMENT (R.U. & D. EASE.). SEE DEDICATION ON SHEET 1 OF 6.

1000-104 BENCH MARK  
land surveying and mapping, inc.

CONRAD W. SCHAEFER CONSULTING ENGINEERS, INC.  
PALM BEACH COUNTY, FLORIDA

DESIGNED	DRAWN	CHECKED	JOB NO.	DRAWING NO.
CWS	WSK	RJW	77-111	
9/13/77	1" = 200'	APPROVED	FILE NO.	SHEET OF 2-6